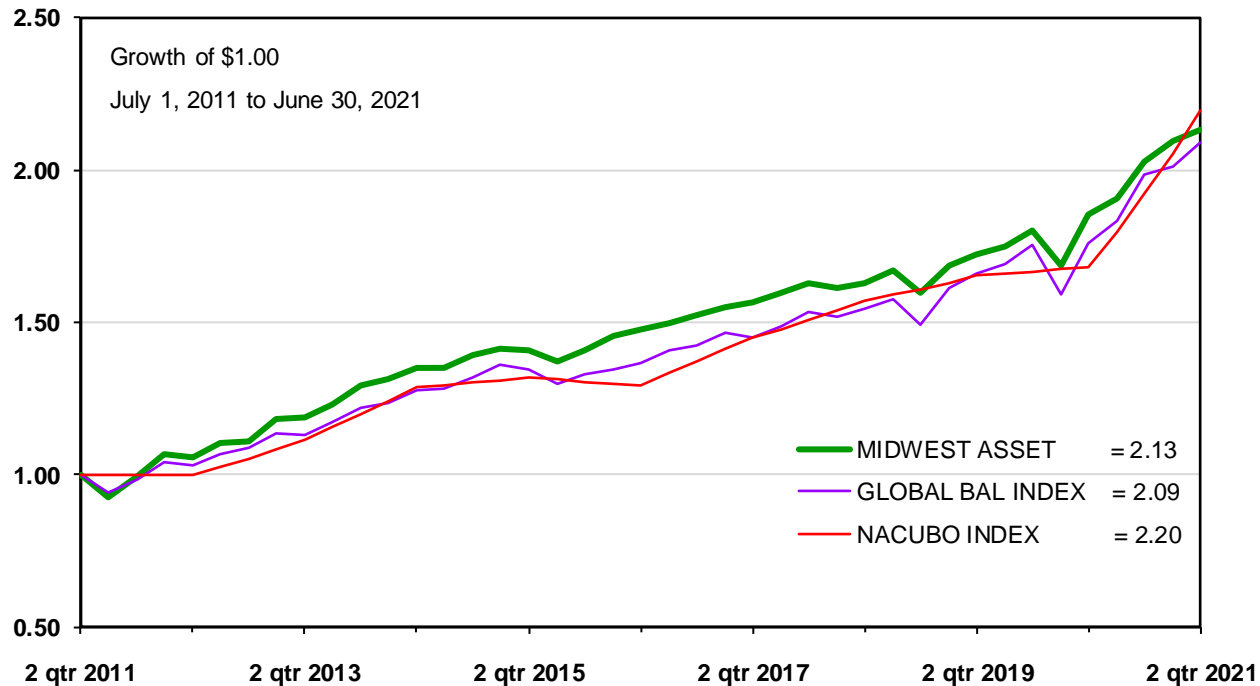


NON-PROFIT RETURN / RISK COMPARATIVE PERFORMANCE



10 YEAR COMPARISON

COMP ANN RET % STAND DEV %

MIDWEST ASSET MANAGEMENT, INC. Managed a local foundation to help reduce needless expenses and avoid insolvency. Midwest did not charge for its services.	7.86	3.45
GLOBAL BALANCED INDEX (50% Russell U.S. 3000 [®] Stock Index + 50% Bloomberg Barclays U.S. Aggregate Bond Index)/2 + (50% MSCI ACWI ex USA Hedged Index + 50% Bloomberg Barclays Global Aggregate ex USD Hedged Index to 12-13 then 50% Bloomberg Barclays Global Aggregate ex USD Float Adjusted RIC Capped Hedged Index) before any portfolio fees.	7.65	3.70
NACUBO[®] INDEX Common Fund Study of Endowments [®] , Total Institutions net of all portfolio fees. Results are reported annually.	8.20	n/a

IMPORTANT NOTES:

1. James W. Byrd was the treasurer and an advisory council member of the foundation. As Midwest did not charge for its services, it does not claim compliance under the Global Investment Performance Standards (GIPS[®]).
2. Due to different methods of calculating performance and other factors, all results are estimates.

CONTACT US FOR DETAILS, and past performance does not guarantee future success.